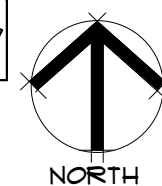
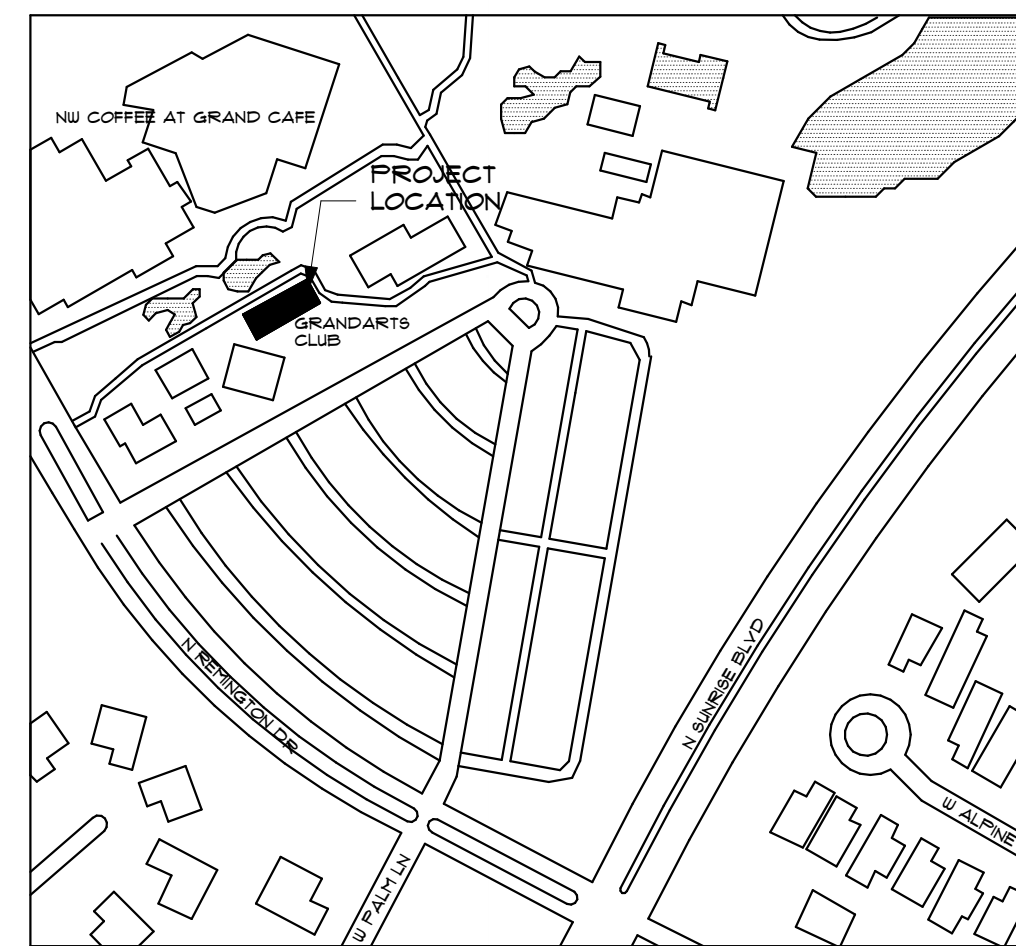


3-D REPRESENTATION FOR ILLUSTRATIVE PURPOSES ONLY, REFER TO DRAWINGS AND DETAILS

PROJECT CONTACTS

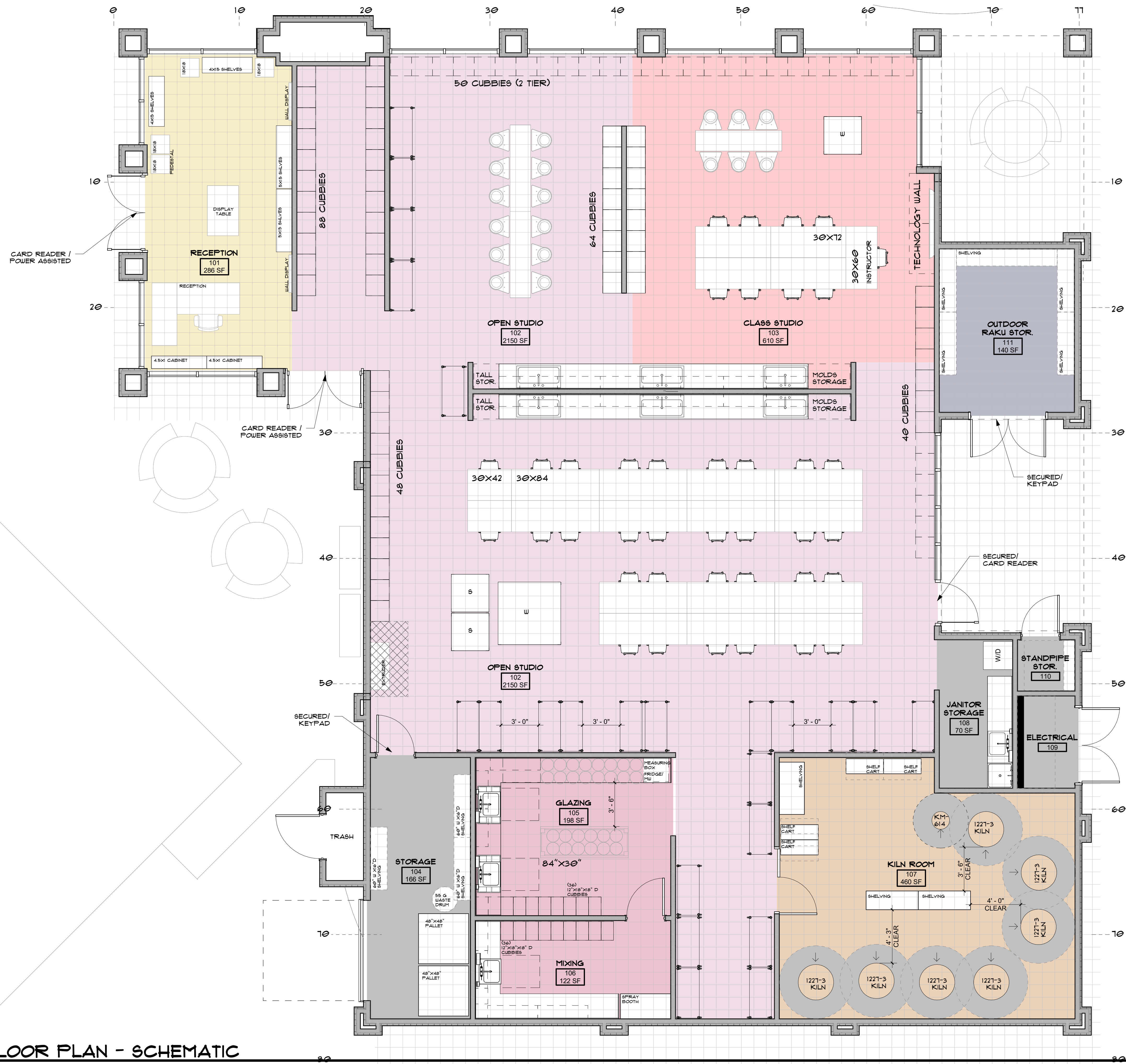
OWNER:
THE GRAND
 19151 N REMINGTON DR
 SURPRISE, AZ 85374
PAUL MCCARTHY PMP
 713.484.9358
 PAUL.MCCARTHY@LIVEGRANDAZ.COM

ARCHITECT:
GH2 ARCHITECTS, LLC
 1291 SOUTH ALMA SCHOOL ROAD
 SUITE 16100
 MESA, ARIZONA 85210
 P(480) 699-1945



SHEET INDEX

C0	COVER SHEET
A01	SCHEMATIC FLOOR PLAN
A02	SCHEMATIC REFLECTED CEILING PLAN
A03	SCHEMATIC ROOF PLAN
A04	SCHEMATIC BUILDING ELEVATIONS
A05	SCHEMATIC BUILDING ELEVATIONS
L100	SCHEMATIC SITE PLAN



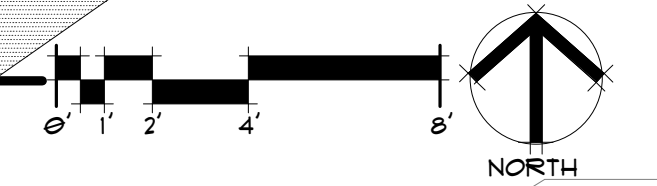
ROOMS LEGEND

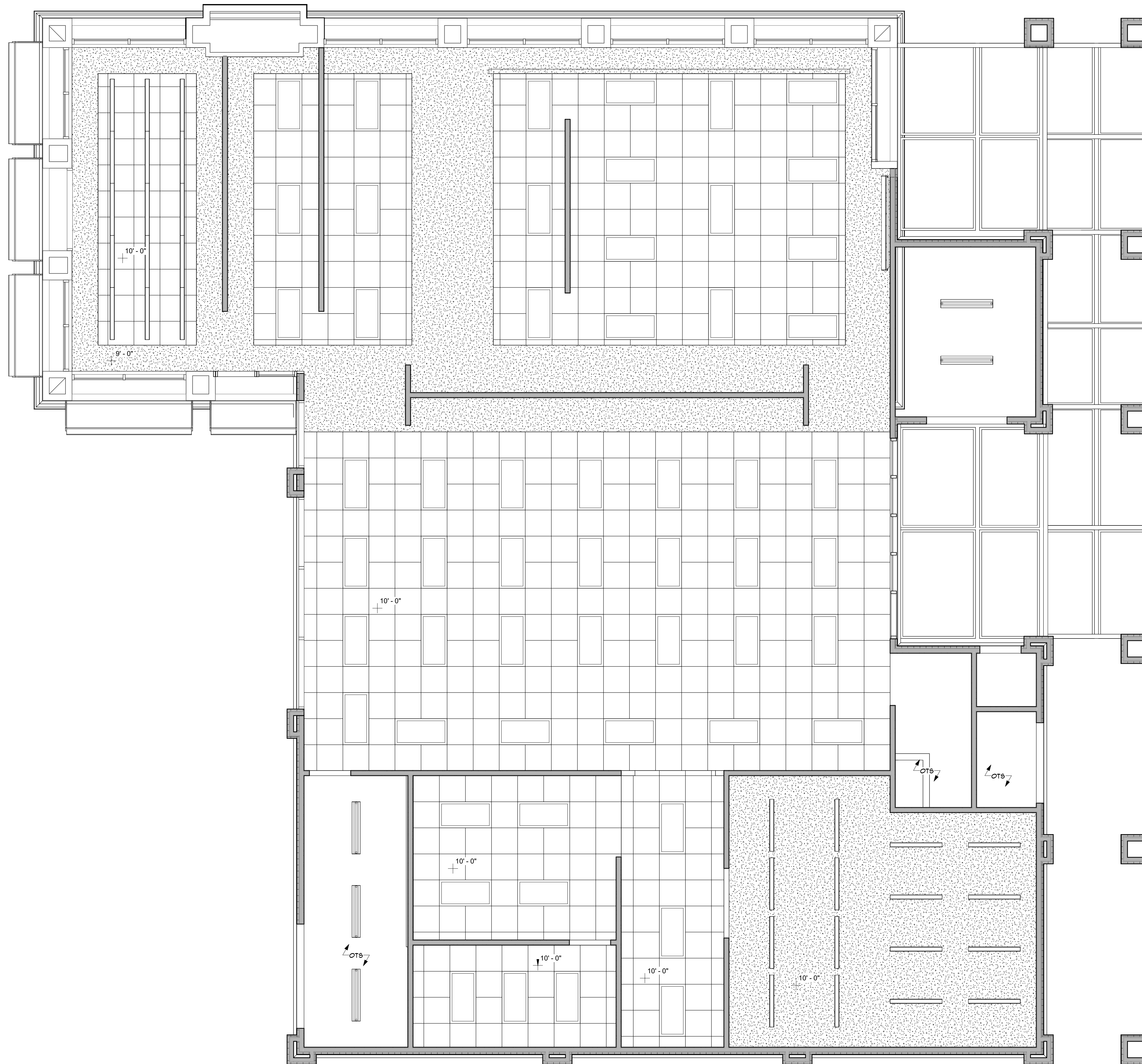


LAYOUT NOTES

- | | |
|---|---|
| WORKTABLES: 36
(14) 36"X84" TABLES
(2) 36"X42" TABLES | MIXING/GLAZE CUBBIES: 100
(12'W X 18'H) |
| CLASSROOM: 8
(4) 36"X12" TABLES | MIXING BUCKETS: 28 |
| CUBBIES: 230
(18'W X 18'H X 20" D) | KILNS: 8
(1) 1221-3 PK
(1) KM-614 |
| WHEELS: 18
(12) OPEN STUDIO
(6) CLASSROOM | DRYING RACKS: (1) 4' WIDE
KILN DRYING RACKS: (6) 4' WIDE |

A FLOOR PLAN - SCHEMATIC
1/4" = 1'-0"



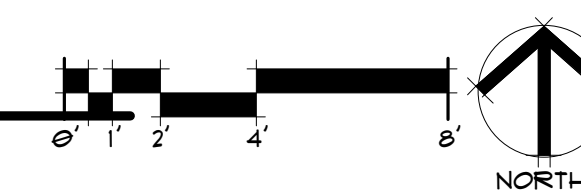


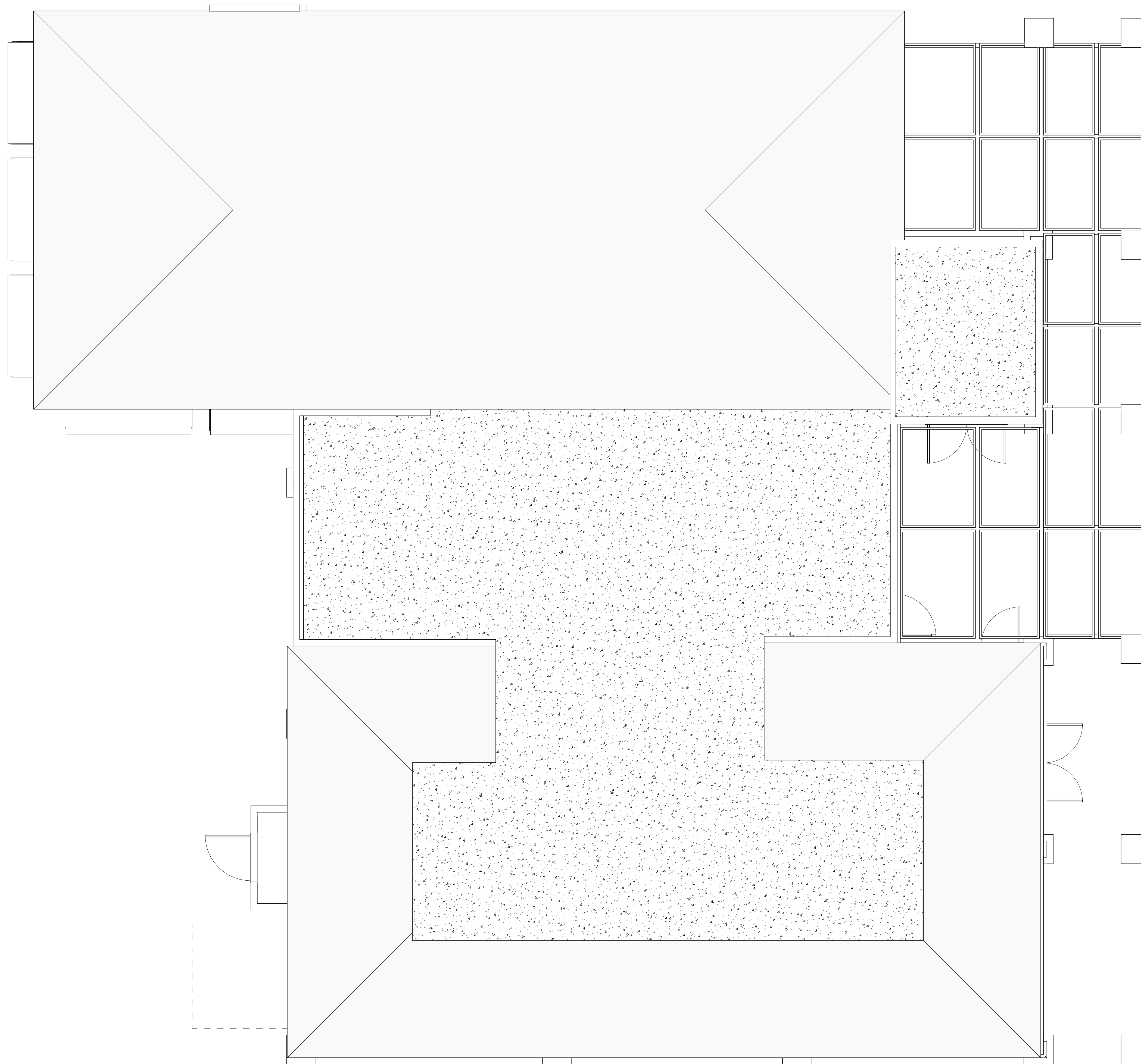
REFLECTED CEILING PLAN LEGEND

	2x4 LAY IN LENS		SUPPLY DIFFUSER
	EMERGENCY 2x4 LAY IN LENS		RETURN
	2x2 LAY IN LENS		10'-0" AFF CEILING HEIGHT
	RECESSED CAN LIGHT		OPEN TO STRUCTURE
	TRACK LIGHT		2x4 ACOUSTIC CEILING TILE (ACT)
	SUSPENDED LINEAR LIGHT		GYPSUM BOARD
	SPECIALTY LIGHTING		

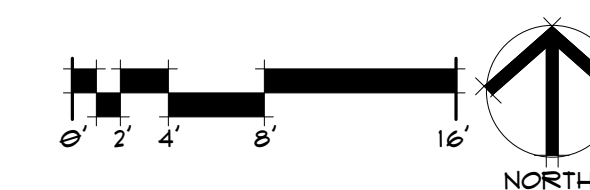
NOTE: REFER TO STRUCTURAL, ELECTRICAL AND MECHANICAL DRAWINGS FOR ADDITIONAL INFORMATION.

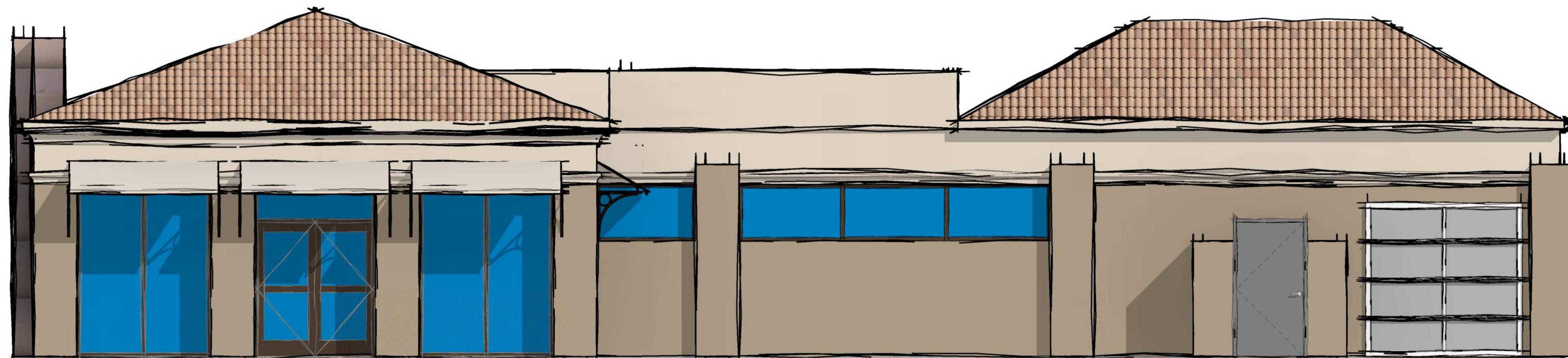
A SCHEMATIC REFLECTED CEILING PLAN
1/4" = 1'-0"





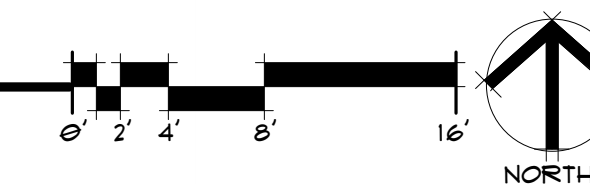
A SCHEMATIC ROOF PLAN
 1/4" = 1'-0"





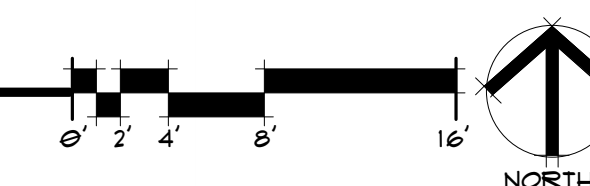
B BUILDING ELEVATION - WEST

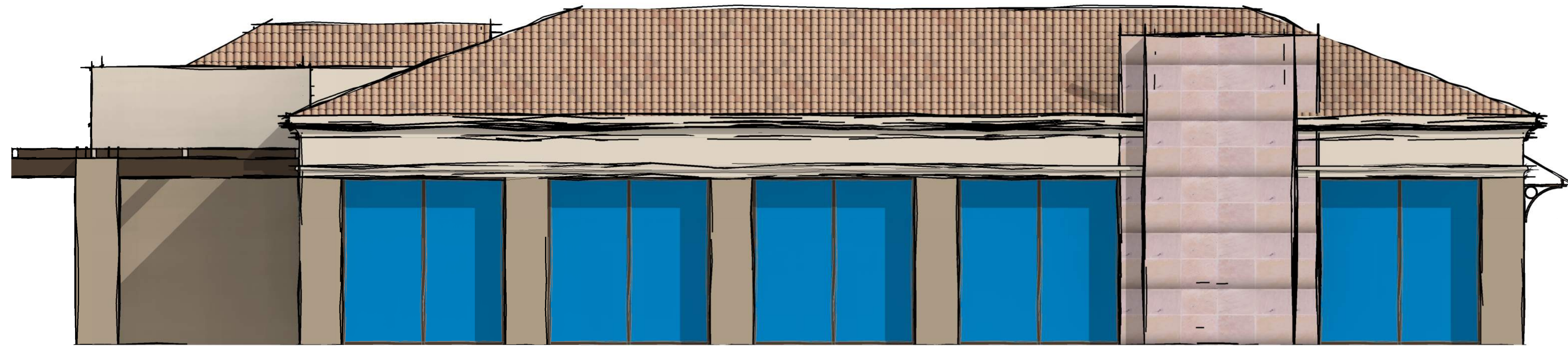
1/4" = 1'-0"



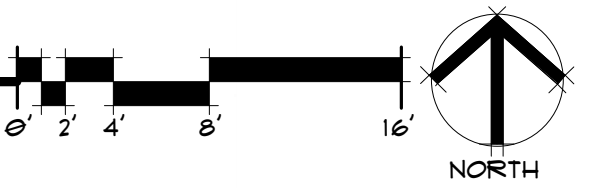
A BUILDING ELEVATION - EAST

1/4" = 1'-0"

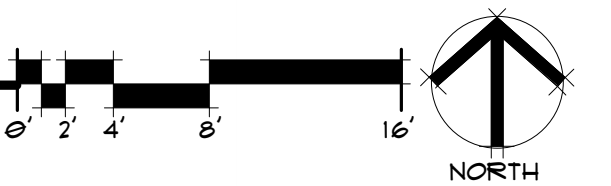


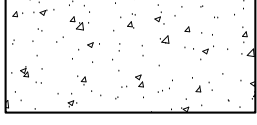
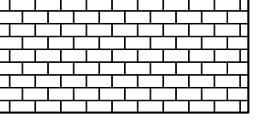
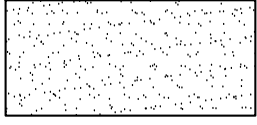


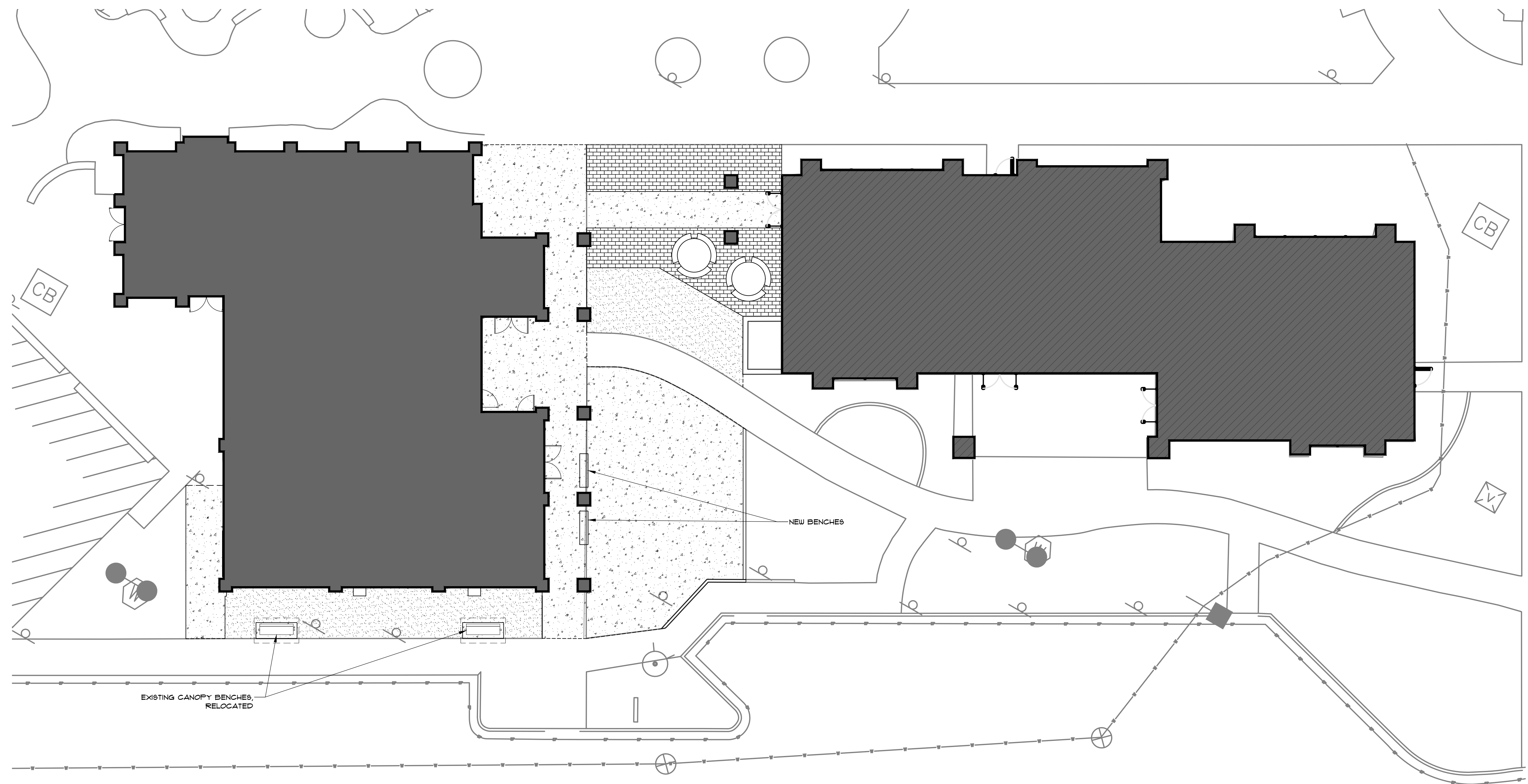
B BUILDING ELEVATION - NORTH
1/4" = 1'-0"



A BUILDING ELEVATION - SOUTH
1/4" = 1'-0"



LEGEND			
	CONCRETE PAVING		CONCRETE PAVERS
	LANDSCAPE AREA		



A SITE PLAN
1" = 10'-0"

